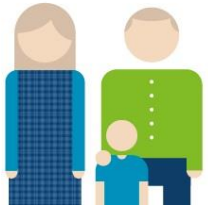




Education Health and Care Plan (EHCP) Workshop

January 2016

Confident Place, Confident People.



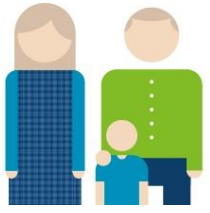
A Wigan Perspective

Working
together



One Local Authority's Experience

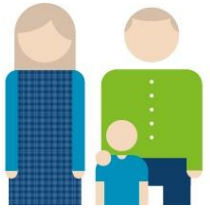
Confident Place, Confident People.



Requirements and 'spirit' of the Act.

We've looked at three question. How do you:-

- Involve parent carers and young people?
- Develop an approach to deliver good EHCPs in a timely manner?
- Build in quality assurance?



Background

- Pathfinder Area
- Regional and National Champions
- Lessons learned 2011-2014



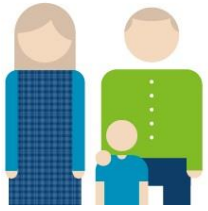
Pre Pathfinder

- 1275 statements maintained
- 150 new assessments each year
- PIs at 100%



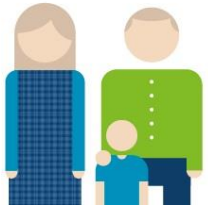
Learning from the Pathfinder

- Pathfinder status brought advantages ie
- Blank piece of paper and no rules
- Working with a group of “Pilot Families” not a full cohort
- Pilot families still refer to the positive impact of being part of the testing
- Many now form the core group of the PCF



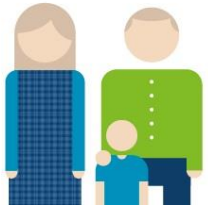
What we did -mantras

- Putting the family at the centre of the process
- Listen and understand
- Look at things from the family's perspective
- What can we do, NOT what do we do!!



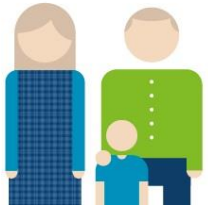
What we did

- All families had a dedicated key worker providing a high level of support
- At least 1 meeting with ALL professionals involved in attendance
- Plan meeting with family and professionals to draw up the EHCP together
- On going support post plan for any aspect including some not on EHCP eg housing



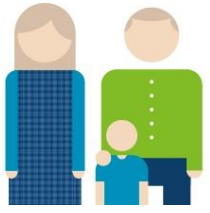
Post Pathfinder Challenges

- Translating the learning from the Pathfinder to real life
- Continuing the high level of input for 150 new referrals and 300 transfers v 75 pilot families
- PIs down to 33% in 2014



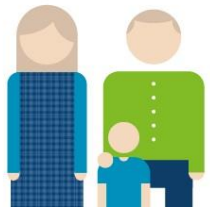
Involving parent carers and young people

- Key working offer for all EHC needs assessments to support families through the EHC Pathway at a level dependent on their circumstances
- KW ensures that, families views are heard, they are able to make choices and they have control over the outcomes



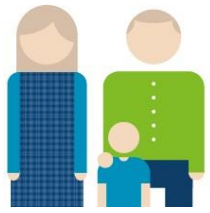
Involving parent carers and young people

- Offer of a “Plan Meeting” for all new assessments
- Transfer review meeting for all transfers
- “Planning Live”
- Medical and other questionnaire
- Independent support (IS)
- Young persons voice – IS and SENDIASS trained



Involving parent carers and young people

- “All About Me” completed with KW and family
- Resource Indication Questionnaire (RIQ)
- Post 16 options form
- Voice of the child toolkit
- Talking Mats training
- Personalisation and person centred planning training

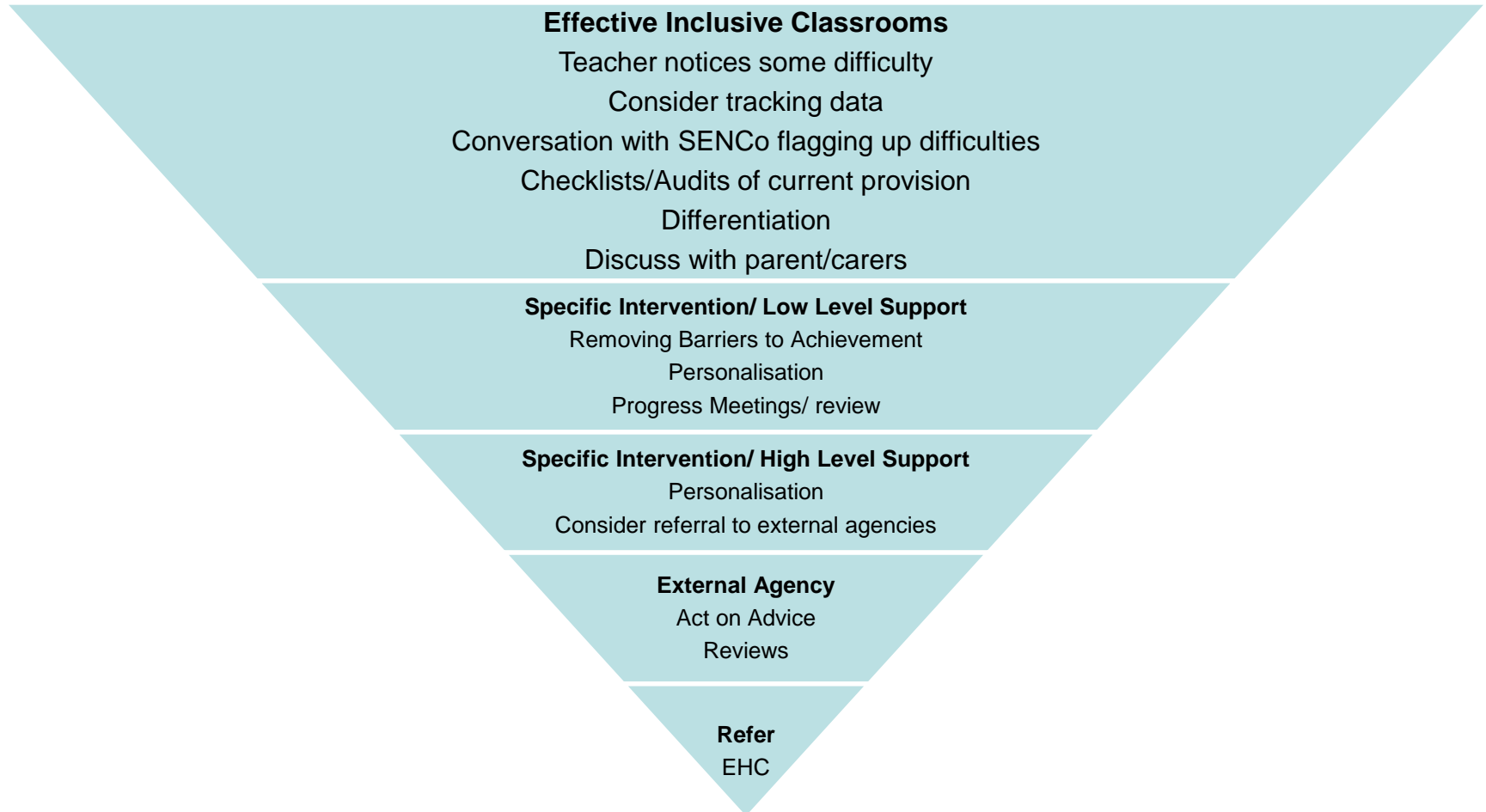


Delivering good quality EHCPs in a timely manner

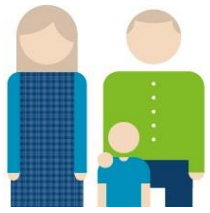
- Graduated approach
- Support for families eg key working
- Organisation of the SENDS team
- Work with other professionals to develop relevant, up to date and outcome focussed advice
- Multi-agency panels for new and completed assessments



Graduated Approach

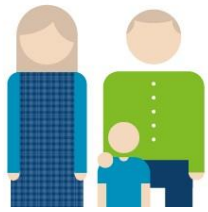


Confident Place, Confident People.



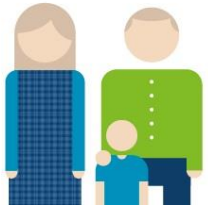
EHC Pathway - High Expectations for All

- Through the Graduated Approach to SEND, the file sets out the Local Authority's reasonable expectations of settings.
- It describes the support available to settings to enable all children and young people to achieve their outcomes.
- It embodies our High Expectations for All children and young people in Wigan.
- www.wigan.gov.uk/highexpectationsforall



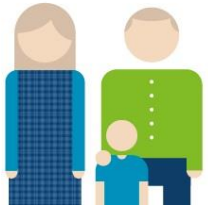
Organisation of the SENDS team

- Education Health and Care (EHC) Pathway 0-25 years
- Autism Pathway 5-16 years
- Special Educational Needs and Disability Information Advice and Support Service (SENDIASS) 0-25 years
- Leisure for All – Short break Service 3-18 years
- Key working co-ordination 0-25
- SENDS care co-ordinator
- Partnership with voluntary sector - Embrace Wigan and Leigh for parent support, key-working, Independent Support (IS) and Parent Carer forum



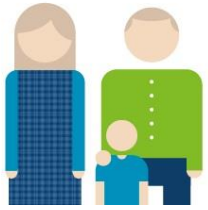
EHC Pathway Team

- 3 “hubs”
- Early years - 0-5 years
- School age - 5-15 years
- Preparing for Adulthood –16-25 years



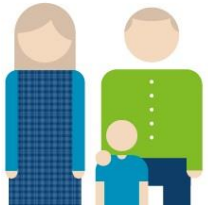
Quality EHC Plans

- Hubs have caseloads according to their age range
- Allows for specialisms to develop
- Cases and timescales monitored through weekly hub meetings
- EHC pathway meetings monthly to bring hubs together to share good practice & learning and provide a solution focussed approach to individual challenges



Quality assurance

- Hub and EHC pathway meetings monitor quality of EHCs and timeliness of assessments (PIs now 99.8%)
- Regional peer support /monitoring meetings
- Feedback from families and professionals



Quality assurance

- EHCPs too long and sometimes too technical!
- On going review of EHC pathway and processes to keep up to date with best practice locally regionally and nationally
- Review of “HEFA” (life without levels)
- Work on “family friendly” information
- Be responsive to feedback we’re all still learning!

Confident Place, Confident People.



Local Offer

[Home](#) / [Resident](#) / [Education and Families](#) / [Special Educational Needs and Disability](#)

Special Educational Needs and Disability - Local Offer

Special Educational Needs and Disabilities (SEND)



Children and Young People

Information about leisure opportunities and ways to get involved.



Families

Information and support for families of children and young people.



Professionals

Information and guidance including downloadable documents.



SEND News and Updates

View a video on the changes to SEND. Keep up to date with related news and documents and give us your comments.



Preparing for Adulthood

Information and guidance for preparing young people into adulthood.



Health

Information about local health services.



Any Questions?

Confident Place, Confident People.